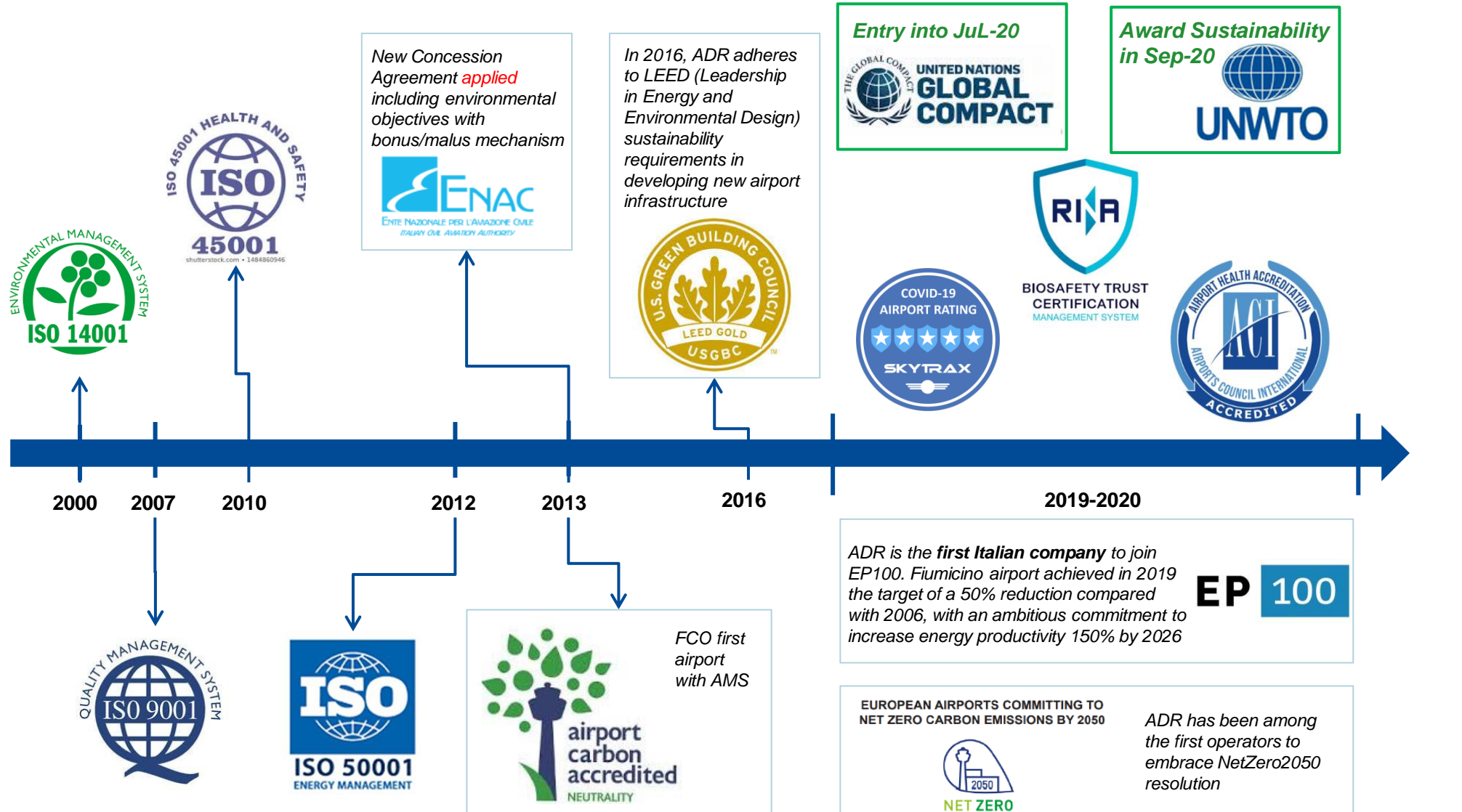


# Net Zero 2030



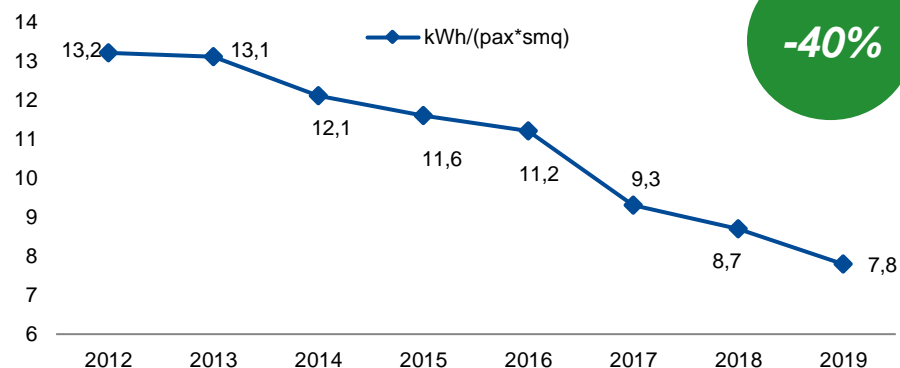
# ADR's activities and key facts



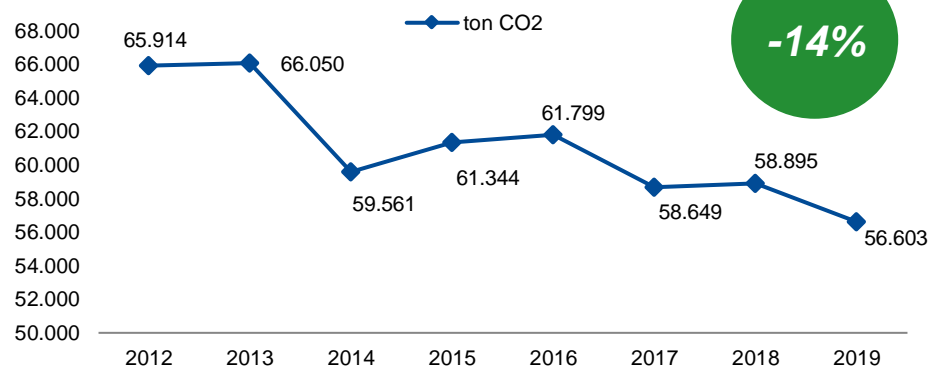
# ADR CO2 emissions' most relevant results



Electrical energy consumption per sqm per pax



Ton of CO2 emissions (scope 1 and 2)



# ADR's CO2 Key Performance Indicator



ADR has selected the following KPI, which is core, relevant, and material to the business and measure the sustainability improvements of the CO2, as climate action:

## **KPI: CO2 emission reduction scope 1 and 2 (kton /year)**

Scope 1 and 2 emissions are all the CO2 emissions under ADR control and are measured in kton/year.

The CO2 emissions/pax are constantly measured, but are heavily affected by Covid consequences over traffic, becoming not consistent in 2020 and in the following years, until full traffic recovery.

**The total amount of CO2 scope 1&2 emissions is calculated according to the A.C.A. (Airport Carbon Accreditation) rules for Level 3+, Neutrality.**

A.C.A. program is based on independent third-party emissions' verification and certification.

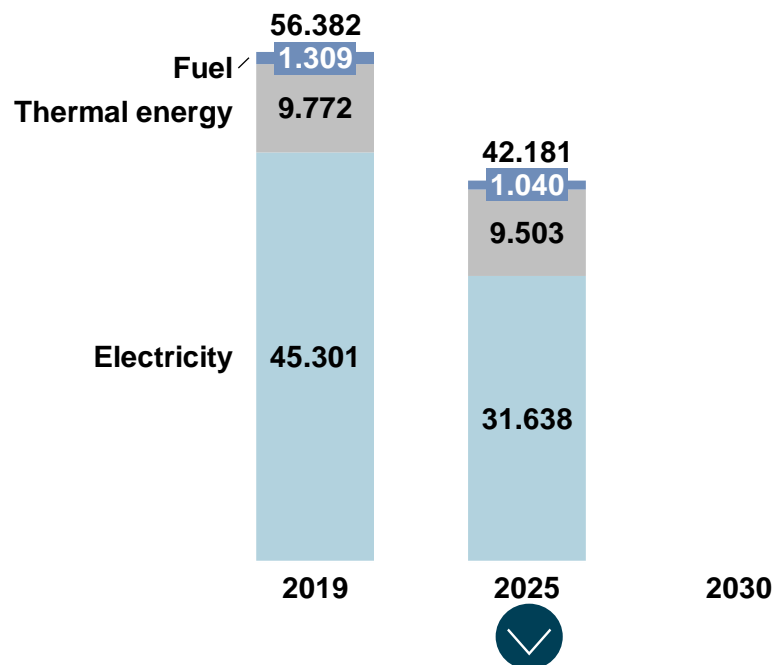


# ADR's CO2 Sustainability Performance Targets



CO<sub>2</sub> reduction (kton /year; scope 1&2)

Towards zero emission



- Renewable energies
- Clean transportations
- Green buildings
- Energies efficiency technologies




## Intermediate and long-term goals:

- GHG Scope 1&2 emissions reduction by 36% by 2025 with respect to 2012 baseline,
- **GHG Scope 1 and 2 Net Zero by 2030\***

Since 2012 to 2019 ADR has reduced CO<sub>2</sub> emissions by 9 kt/y, with net zero commitment by 2030 the reduction from 2019 to 2030 will be 6x, for a total amount of 56 kt/y

\*Net Zero according to A.C.A. (Airport Carbon Accreditation) rules for Level 3+, Neutrality.

# Sustainable airport roadmap towards 2030 objectives

Priorities	Actions	SDGs
Zero emissions airports 2030	<p>ADR has been among the first operators to embrace NetZero2050 resolution. Now ADR is committed to achieve net zero airports carbon emissions by 2030 leveraging on the following activities and projects:</p> <ul style="list-style-type: none"> <li>i) <b>Renewable Energies:</b> realization of 60 MW photovoltaic power plant;</li> <li>ii) <b>Clean Transportation and infrastructure for low carbon transport:</b> installation of hundreds of electric vehicle recharging stations, with V2G technology; Increasing smart and clean mobility to and from the airport by investing in electric recharging stations with clean energy availability and facilitating electric car sharing; converting own fleet to electric or HVO.</li> <li>iii) <b>Green Buildings:</b> with a view to pursue “brownfield” development, the infrastructure plan is based on new, existing or refurbished buildings which have received at least one of the following criteria: the LEED Gold, BREEAM Very Good, EPBD A;</li> <li>iv) <b>Energies efficiency technologies;</b></li> <li>v) <b>Other Initiatives:</b> use of bio-methane for heating, contributing to sustainable aviation fuel, making biofuel available at the airport distribution center.</li> </ul>	
	<p>ADR has already reached maximum levels of recycled waste (98% in 2019). ADR's efforts are now focused on waste reduction and airport circular economy processes, in order to reach the zero-waste configuration airport:</p> <ul style="list-style-type: none"> <li>i) the composting plant for organic waste will be brought up to be fully operational (2.5 tons of organic waste per day);</li> <li>ii) installing special equipment for compacting PET bottles;</li> <li>iii) strengthen periodic meetings with tenants (food and retail) in order to promote waste reduction strategy and plastic strategy (packaging reduction, disposable plastic use reduction, etc.);</li> </ul> <p>Sludge de-watering processes</p>	 

# Sustainability-Linked Framework: The KPIs and SPTs

KPIs	SPTs	Action Plan																				
CO <sub>2</sub> Emission - Scope 1 and 2	<p>CO<sub>2</sub> (k tonnes)</p> <table><tr><th>Year</th><th>CO<sub>2</sub> (k tonnes)</th></tr><tr><td>2016</td><td>62</td></tr><tr><td>2017</td><td>58</td></tr><tr><td>2018</td><td>59</td></tr><tr><td>2019</td><td>59</td></tr><tr><td>2027</td><td>28</td></tr><tr><td>2030</td><td>0</td></tr></table> <p>2019 Baseline</p>	Year	CO <sub>2</sub> (k tonnes)	2016	62	2017	58	2018	59	2019	59	2027	28	2030	0	<ul style="list-style-type: none"><li>i. Renewable Energies: <b>multi MW photovoltaic power plants</b> and procurement of certified green electricity</li><li>ii. Phase out of the existing methane powered CHP and use of bio methane for boilers from 2029</li><li>iii. Installation (on top of the existing thermic storage of 20 MW and 60 MWh) of a <b>Multi MW electric storage</b></li><li>iv. <b>Green Buildings with certification</b>: the LEED “Gold”, BREEAM “Very Good”, EPBD “A”</li><li>v. <b>Electric vehicles fleet</b>: substitution of the entire fleet</li><li>vi. <b>Energy efficiency technologies</b></li></ul>						
Year	CO <sub>2</sub> (k tonnes)																					
2016	62																					
2017	58																					
2018	59																					
2019	59																					
2027	28																					
2030	0																					
Maintaining ACA Level 4+ Accreditation	<p><i>The accreditation is reviewed every 3 years (2024, 2027, etc.)</i></p>	<ul style="list-style-type: none"><li>i. <b>Availability of Sustainable Aviation Fuels</b> by 2024 in line with the ALIGHT EU-funded project</li><li>ii. Installation into the airport of ca. <b>500 charging points for electric vehicles</b> by 2025</li><li>iii. Improvement of <b>rail accessibility</b></li><li>iv. Improvement of <b>buses accessibility</b> and link the airport to the regional cycle lines network</li><li>v. Initiatives within <b>SESAR program</b></li><li>vi. Actions to <b>raise awareness on airport’s tenants</b> for the procurement of green certified energy and the use of electric vehicles</li><li>vii. Raising awareness <b>initiatives and working group with handlers</b> for the usage of hybrid/electric vehicles and incentive policies</li></ul>																				
CO <sub>2</sub> Emission - Scope 3 <sup>(1)</sup>	<p>Kg CO<sub>2</sub>/pax</p> <table><tr><th>Year</th><th>Kg CO<sub>2</sub>/pax</th></tr><tr><td>2016</td><td>15,8</td></tr><tr><td>2017</td><td>15,7</td></tr><tr><td>2018</td><td>17,4</td></tr><tr><td>2019</td><td>14,3</td></tr><tr><td>2027</td><td>13,3</td></tr><tr><td>2030</td><td>12,9</td></tr></table> <p>2019 Baseline</p> <p>CO<sub>2</sub> (k tonnes)</p> <table><tr><td>658</td><td>643</td><td>747</td><td>623</td><td>580</td><td>561</td></tr></table>	Year	Kg CO <sub>2</sub> /pax	2016	15,8	2017	15,7	2018	17,4	2019	14,3	2027	13,3	2030	12,9	658	643	747	623	580	561	
Year	Kg CO <sub>2</sub> /pax																					
2016	15,8																					
2017	15,7																					
2018	17,4																					
2019	14,3																					
2027	13,3																					
2030	12,9																					
658	643	747	623	580	561																	

(1) Excluding aircrafts sources