



ACI-APN - Europe Punctuality Report: Annual 2024

For Immediate Release 3 Mar 2025

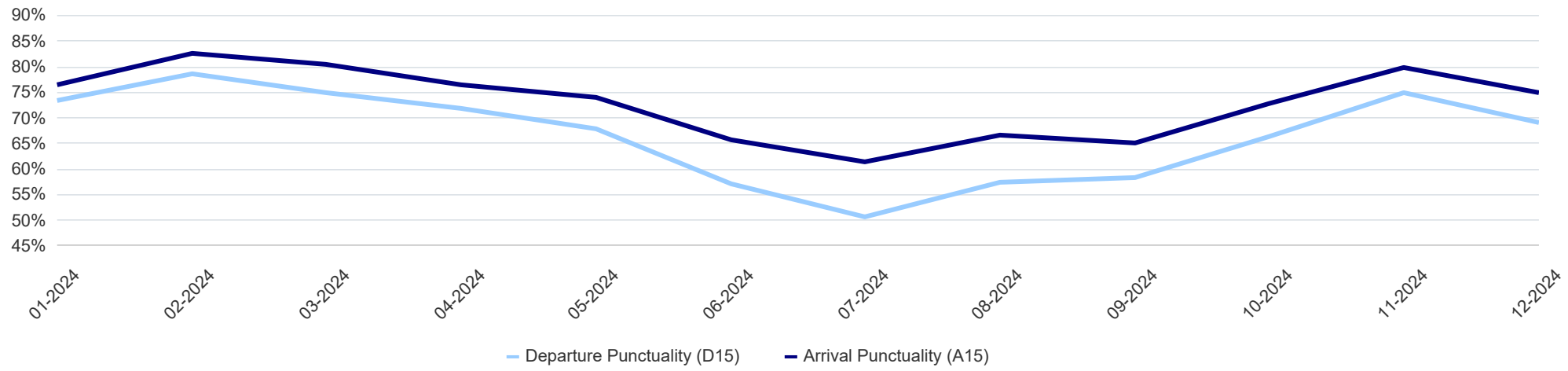
For the full year of 2024, at the 30+ airports part of ACI EUROPE's Airport Performance Network, 72.4% of flights arrived and 65.8% departed on-time. This is an increase of 1.8% on arrival and 2% on departure compared to 2023. Additionally, the difference between punctuality of arriving and departing flights (6.6%) has stabilised.

In 2024, there were 10.7 million flights across the European network—an increase of 4.9% compared to 2023, with an average of 1,160 more flights per day. While air traffic continued its recovery from the COVID-19 pandemic, the network and aviation industry was strongly impacted by the Russian invasion in Ukraine and the conflict in Israel.

En-route ATFM delays rose by 23% from the previous year, averaging 2.1 minutes per flight. This added up to around 61,915 minutes of daily delays. July 2024 saw the highest delays, reaching an average of 5.7 minutes per flight. The majority (79.9%) of these en-route delays were concentrated on the south-east and south-west axes of the network. During peak summer months, especially on Fridays and Saturdays, daily ATFM delays exceeded 140,000 minutes. Severe weather also played a significant role in disruptions, particularly in July, contributing to 35.9% of the total 8.1 million minutes of en-route delays.

At airports, operations were primarily impacted by adverse weather across Western Europe. London Heathrow experienced the most significant disruptions, followed by Porto, Lisbon and London Gatwick. The main causes were reactionary delays, weather conditions, aerodrome capacity constraints, air traffic control (ATC) capacity and staffing issues.

Arrival and Departure Punctuality (A15/D15) for all Airports



Arrival Punctuality (A15): Annual 2024

Category	Airport	APN-E Average	Punctuality (%)
1: Over 25 Mil pax	AMS Amsterdam	72.3%	74.7%
	ARN Stockholm	78.6%	78.6%
	ATH Athens	68.5%	68.5%
	BCN Barcelona	74.9%	74.9%
	BRU Brussels	75.4%	75.4%
	CDG Paris	74.9%	74.9%
	CPH Copenhagen	77.7%	77.7%
	DUB Dublin	71.5%	71.5%
	DUS Düsseldorf	74.5%	74.5%
	FCO Rome	71.8%	71.8%
	FRA Frankfurt	72.0%	72.0%
	LGW London	63.1%	63.1%
	LHR London	68.1%	68.1%
	LIS Lisbon	63.4%	63.4%
	MAD Madrid	78.1%	78.1%
	MUC Munich	73.1%	73.1%
	MXP Milan	70.3%	70.3%
	OSL Oslo	80.2%	80.2%
	PMI Palma De Mallorca	72.6%	72.6%
	STN London	64.1%	64.1%
VIE Vienna	74.5%	74.5%	
ZRH Zürich	71.0%	71.0%	
2: 10-25 Mil pax	BUD Budapest	67.1%	67.1%
	EDI Edinburgh	69.4%	69.4%
	GVA Geneva	71.8%	71.8%
	LTN London	68.4%	68.4%
	LYS Lyon	75.6%	75.6%
	NAP Naples	70.9%	70.9%
	OPO Porto	67.8%	67.8%
	PRG Prague	70.9%	70.9%
	STR Stuttgart	72.3%	72.3%
3: 5-10 Mil pax	BLQ Bologna	71.1%	71.1%
	FAO Faro	74.7%	74.7%
	LIN Milan	77.7%	77.7%
4: Less than 5 Mil pax	TRN Turin	73.9%	73.9%

Departure Punctuality (D15): Annual 2024

Category	Airport	APN-E Average	Punctuality (%)
1: Over 25 Mil pax	AMS Amsterdam	65.8%	61.1%
	ARN Stockholm	79.0%	79.0%
	ATH Athens	61.4%	61.4%
	BCN Barcelona	67.4%	67.4%
	BRU Brussels	67.1%	67.1%
	CDG Paris	59.7%	59.7%
	CPH Copenhagen	79.6%	79.6%
	DUB Dublin	69.2%	69.2%
	DUS Düsseldorf	67.9%	67.9%
	FCO Rome	65.0%	65.0%
	FRA Frankfurt	59.0%	59.0%
	LGW London	59.7%	59.7%
	LHR London	69.1%	69.1%
	LIS Lisbon	53.7%	53.7%
	MAD Madrid	69.5%	69.5%
	MUC Munich	60.1%	60.1%
	MXP Milan	64.8%	64.8%
	OSL Oslo	82.9%	82.9%
	PMI Palma De Mallorca	61.3%	61.3%
	STN London	64.3%	64.3%
VIE Vienna	71.7%	71.7%	
ZRH Zürich	59.9%	59.9%	
2: 10-25 Mil pax	BUD Budapest	65.1%	65.1%
	EDI Edinburgh	67.6%	67.6%
	GVA Geneva	66.1%	66.1%
	LTN London	71.1%	71.1%
	LYS Lyon	69.5%	69.5%
	NAP Naples	59.7%	59.7%
	OPO Porto	64.4%	64.4%
	PRG Prague	67.3%	67.3%
	STR Stuttgart	71.3%	71.3%
3: 5-10 Mil pax	BLQ Bologna	69.4%	69.4%
	FAO Faro	69.8%	69.8%
	LIN Milan	77.5%	77.5%
4: Less than 5 Mil pax	TRN Turin	68.2%	68.2%

Airports ranked alphabetically, and by numbers of commercial flights operated on arrival and departure (ACI Europe Airport Grouping - based on 2019 data).

Only passenger flights are taken into consideration, excluding General Aviation and Business Aviation. Data includes flights of IATA Service Type Codes: B (Additional Flights - Passenger - Shuttle Mode), C (Charter - Passenger - Passenger Only), G (Additional Flights - Passenger - Normal Service), J (Scheduled - Passenger - Normal Service), L (Charter - Passenger/Cargo/Mail - Passenger and Cargo and/or Mail), O (Charter - Special Handling - Charter requiring special handling), Q (Scheduled - Passenger/Cargo - Passenger/Cargo in Cabin), R (Additional Flights Passenger/Cargo - Passenger/Cargo in Cabin), S (Scheduled - Passenger - Shuttle Mode).

15' Punctuality (Arrival A15/Departure D15): It is the percentage of punctual flights on arrival/on departure (15 minutes) in relation to the total number of operated flights on arrival/on departure. With regard to the 15 minutes punctuality, all flights are considered to be punctual when they are delayed up to 15:59 mins.

Average Arrival/Departure delay per flight: the total delay minutes of flights delayed one minute or more are divided by the total amount of operated flights on arrival or on departure.

The group was established in 2009 with the objective to standardise the reporting of airport punctuality data, to exchange best practices concerning operational performance and predictability at European airports. Under the European Commission Implementing Regulation (EU) 2019/317 these airports must submit their operational data, on a monthly basis, to the Performance Review Unit (PRU) and CODA of EUROCONTROL. By publishing punctuality data from this validated source, APN - Europe assures the accuracy of the performance data in the public domain and are not dependent on third party interpretation.

This document is published by EUROCONTROL and APN - Europe for information purposes. It may be copied in whole or in part provided that EUROCONTROL and APN-Europe are mentioned as the source and to the extent justified by the non-commercial use (not for sale). The information in this document may not be modified without prior written permission from EUROCONTROL and APN-Europe.

The use of this document is at the user's sole risk and responsibility. EUROCONTROL and APN - Europe expressly disclaim any and all warranties with respects to any content within the document, express or implied.

APN - Airport Performance Network - Annual 2024

ACI Grouping	Airport IATA Code	City	On Arrival Commercial ATMs	On Departure Commercial ATMs	Arrival Punctuality (A15)	Departure Punctuality (D15)	Average Arrival Delay per Flight (Min)	Average Departure Delay per Flight (Min)
1: Over 25 Mil pax	AMS	Amsterdam	230,149	230,343	74.7%	61.1%	14.8	19.6
	ARN	Stockholm	88,753	88,662	78.6%	79.0%	11.5	11.3
	ATH	Athens	119,970	120,025	68.5%	61.4%	15.4	19.0
	BCN	Barcelona	163,080	163,865	74.9%	67.4%	15.3	19.0
	BRU	Brussels	82,323	82,212	75.4%	67.1%	13.1	17.3
	CDG	Paris	212,734	213,025	74.9%	59.7%	14.5	20.7
	CPH	Copenhagen	113,767	113,653	77.7%	79.6%	12.1	11.3
	DUB	Dublin	115,482	115,207	71.5%	69.2%	16.9	17.3
	DUS	Düsseldorf	73,740	73,560	74.5%	67.9%	13.3	16.7
	FCO	Rome	153,022	152,861	71.8%	65.0%	16.4	19.1
	FRA	Frankfurt	207,857	207,907	72.0%	59.0%	15.8	20.6
	LGW	London	133,184	132,877	63.1%	59.7%	23.5	23.0
	LHR	London	235,272	235,538	68.1%	69.1%	17.2	16.5
	LIS	Lisbon	111,890	111,672	63.4%	53.7%	18.7	23.0
	MAD	Madrid	189,956	190,748	78.1%	69.5%	11.9	16.3
	MUC	Munich	156,835	156,790	73.1%	60.1%	14.1	19.6
	MXP	Milan	86,384	86,327	70.3%	64.8%	18.2	20.9
	OSL	Oslo	101,514	101,500	80.2%	82.9%	11.4	10.7
	PMI	Palma De Mallorca	109,883	110,033	72.6%	61.3%	17.1	23.5
	STN	London	89,586	89,396	64.1%	64.3%	21.0	19.6
VIE	Vienna	115,095	114,366	74.5%	71.7%	15.4	16.7	
ZRH	Zürich	116,255	116,211	71.0%	59.9%	14.4	19.2	
2: 10-25 Mil pax	BUD	Budapest	53,529	53,542	67.1%	65.1%	20.3	21.3
	EDI	Edinburgh	56,622	56,563	69.4%	67.6%	17.2	17.9
	GVA	Geneva	68,533	68,526	71.8%	66.1%	14.6	17.6
	LTN	London	50,137	50,167	68.4%	71.1%	19.5	17.7
	LYS	Lyon	43,890	43,844	75.6%	69.5%	14.3	17.4
	NAP	Naples	43,927	43,978	70.9%	59.7%	38.3	25.5
	OPO	Porto	50,462	50,369	67.8%	64.4%	18.1	20.1
	PRG	Prague	55,534	55,485	70.9%	67.3%	18.0	19.0
	STR	Stuttgart	36,467	36,422	72.3%	71.3%	14.4	15.4
	3: 5-10 Mil pax	BLQ	Bologna	36,936	36,866	71.1%	69.4%	17.1
FAO		Faro	30,170	30,178	74.7%	69.8%	13.2	16.6
LIN		Milan	41,197	41,281	77.7%	77.5%	11.3	12.0
4: Less than 5 Mil pax	TRN	Turin	16,725	16,652	73.9%	68.2%	15.5	19.1

Airports ranked alphabetically, and by numbers of commercial flights operated on arrival and departure (ACI Europe Airport Grouping - based on 2019 data).

Only passenger flights are taken into consideration, excluding General Aviation and Business Aviation. Data includes flights of IATA Service Type Codes: B (Additional Flights - Passenger - Shuttle Mode), C (Charter - Passenger - Passenger Only), G (Additional Flights - Passenger - Normal Service), J (Scheduled - Passenger - Normal Service), L (Charter - Passenger/Cargo/Mail - Passenger and Cargo and/or Mail), O (Charter - Special Handling - Charter requiring special handling), Q (Scheduled - Passenger/Cargo - Passenger/Cargo in Cabin), R (Additional Flights Passenger/Cargo - Passenger/Cargo in Cabin), S (Scheduled - Passenger - Shuttle Mode).

15' Punctuality (Arrival A15/Departure D15): It is the percentage of punctual flights on arrival/on departure (15 minutes) in relation to the total number of operated flights on arrival/on departure. With regard to the 15 minutes punctuality, all flights are considered to be punctual when they are delayed up to 15:59 mins.

Average Arrival/Departure delay per flight: the total delay minutes of flights delayed one minute or more are divided by the total amount of operated flights on arrival or on departure.

The group was established in 2009 with the objective to standardise the reporting of airport punctuality data, to exchange best practices concerning operational performance and predictability at European airports. Under the European Commission Implementing Regulation (EU) 2019/317 these airports must submit their operational data, on a monthly basis, to the Performance Review Unit (PRU) and CODA of EUROCONTROL. By publishing punctuality data from this validated source, APN – Europe assures the accuracy of the performance data in the public domain and are not dependent on third party interpretation.

This document is published by EUROCONTROL and APN – Europe for information purposes. It may be copied in whole or in part provided that EUROCONTROL and APN-Europe are mentioned as the source and to the extent justified by the non – commercial use (not for sale). The information in this document may not be modified without prior written permission from EUROCONTROL and APN-Europe.

The use of this document is at the user's sole risk and responsibility. EUROCONTROL and APN – Europe expressly disclaim any and all warranties with respects to any content within the document, express or implied.